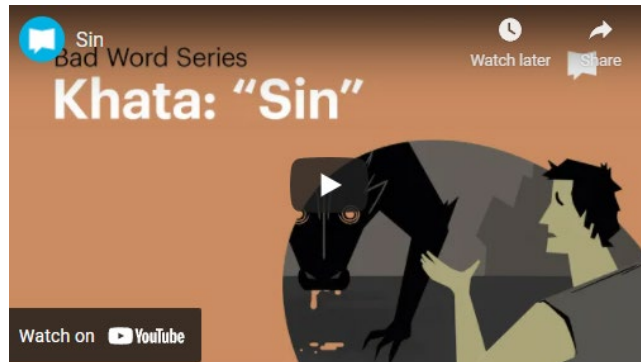

V. QUIET TIME QUESTIONS ABOUT VIDEO

V.L4: KHATA-SIN

Video Link: <https://bit.ly/bpkhatasin>



1. What trouble do you have with words like Sin, iniquity, Transgression

2. What do we learn about the word "Sin"?

3. What is the metaphor of a Sling shot? How do we miss?

4. How does failure to love people reflect our failure to love God? How is this sin (Khata).

5. What failures do we see in the story? David, Saul, Pharoah

6. How is Cain and Abel a picture or this sin (Khata)?

7. What does it mean to be "slave to sin"?

8. How do these failures of our behavior impact you?

9. How does Jesus fit into dealing with sin?

10. How do you respond to Jesus' solution to sin?

DIGGING IN DEEPER

1. What is the most important part of this lesson to you? Explain.

2. How do you see applying aspects of this lesson to your life?

3. When do you feel would be the best time to make that application?

4. What do you hear the Lord speaking to you about this right now?
